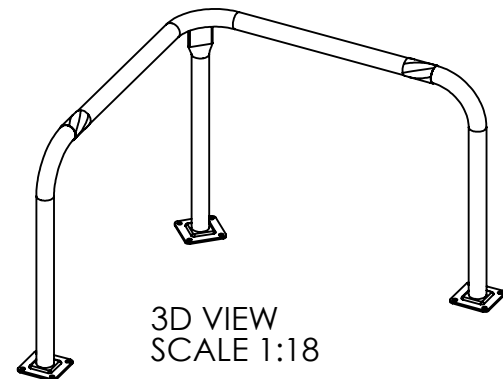
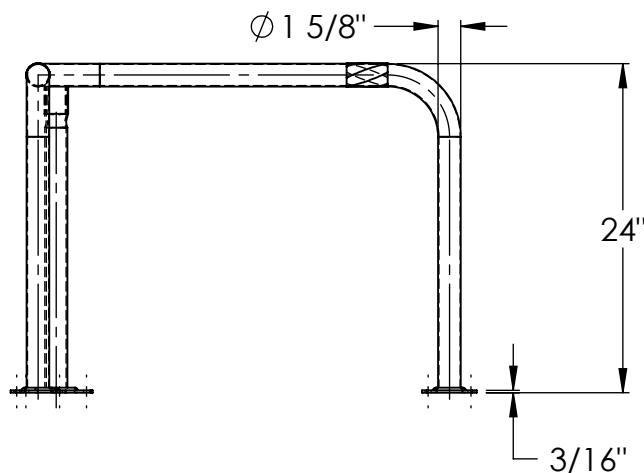
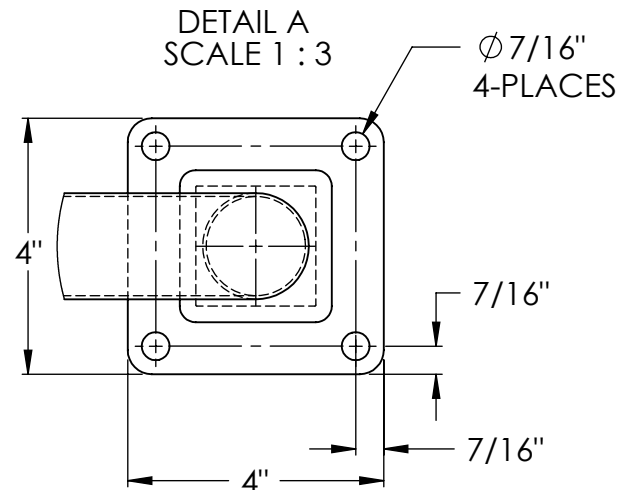
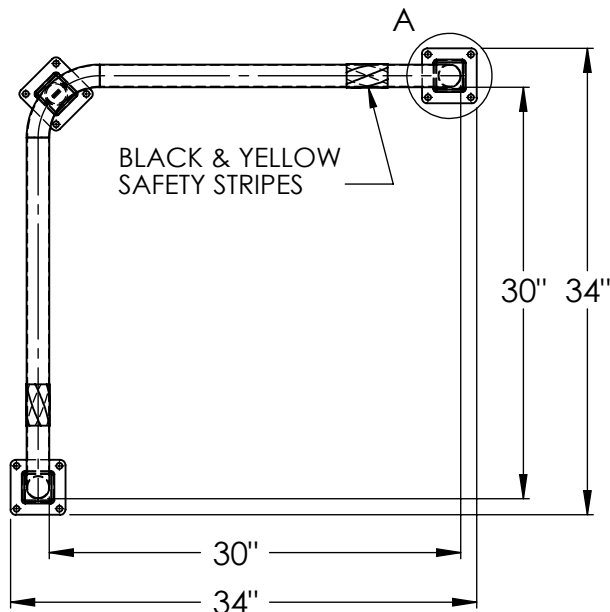


# TRIPLE ELBOW GUARD - TEGC-30-24-2 WITH CENTER SUPPORT

APPROX WEIGHT: 13.83 lbs.  
DOES NOT INCLUDE WEIGHT OF POWER OR PACKAGING!!!

\*\*\*ANY ADDITIONS, DELETIONS, OR OMISSIONS MUST BE CORRECTED ON THIS DRAWING AS THIS DRAWING WILL BE CONSIDERED ALL INCLUSIVE\*\*\*



ALL GRAPHICS PROVIDED ARE FOR REFERENCE ONLY. IF CERTAIN DIMENSIONS ARE CRITICAL PLEASE VERIFY THOSE DIMENSIONS WITH YOUR SALESPERSON

## STANDARD FEATURES

MODEL NUMBER IS TEGC-30-24-2  
GUARD LENGTH: 30"  
GUARD DEPTH: 30"  
OVERALL LENGTH: 34"  
OVERALL DEPTH: 34"  
OVERALL HEIGHT: 24"  
PIPE DIAMETER: 1 5/8"  
(2) 4" x 4" MOUNTING PLATES  
BLACK AND YELLOW SAFETY STRIPES  
TOUGH BAKED IN POWDER  
COATED YELLOW FINISH  
ALL STEEL CONSTRUCTION  
(ASTM A-36 MIN.) WITH  
WELDING TO MEET AWS  
WARNING: CHECK APPLICABLE STATE  
& LOCAL LAWS FOR YOUR AREA

## SPECIAL FEATURES

NONE

FOR INTERNAL USE ONLY PROJECT SIGN OFF	
SALES	
ENG.	
FAB.	
POWER	

DIMENSION TOLERANCE  $\pm 1/4"$

<b>A P P R O V A L</b>	I, THE UNDERSIGNED, AGREE THAT THE PRODUCT AS REPRESENTED SATISFIES DESIGN AND DIMENSION REQUIREMENTS. I ALSO ACKNOWLEDGE MY DUTY TO CONFIRM PRODUCT AND INSTALLATION COMPLIANCE WITH ALL APPLICABLE FEDERAL, STATE AND LOCAL REGULATIONS AND STANDARDS. <b>ANY MODIFIED UNITS ARE NON-RETURNABLE</b> [ ] As drawn [ ] As marked	
	Signed: _____ Date: _____	
	Printed Name: _____	
	LEAD TIME WILL START UPON RECEIPT OF SIGNED APPROVAL DRAWING	

DISTRIBUTOR'S NAME:		P.O.#
VESTIL MANUFACTURING		X
DRAWN BY: SR		W.O.#
DATE: 07/23/08		X
REFERENCE: X	SCALE: 1:14	SALES: X
QUOTED LEAD TIME: X	QUOTE # X	FILE NAME:
		23-007-249