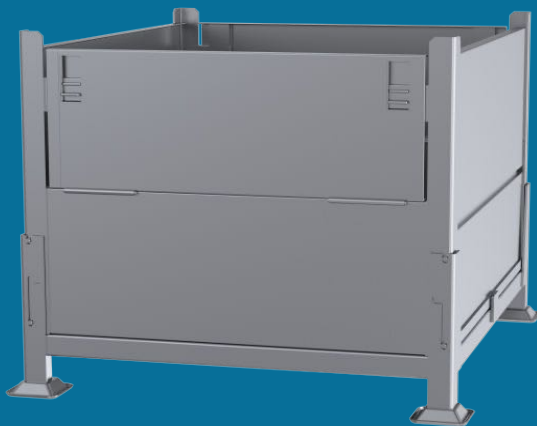


## Shipping Information

- Shipping Dimensions - 40 1/2" x 34 1/2" x 94"
- Weight of bin 173 lbs
- Stacked 3 high when Erected
- Stacked 7 high when Collapsed
- 108 Erected Bins Fit on 53' Trucks
- 252 Collapsed Bins Fit on 53' Trucks
- Interstackable with all other Davco 40 1/2" x 34 1/2" Series Standard Steel Bins
- Tariff number 7326.90.86.88



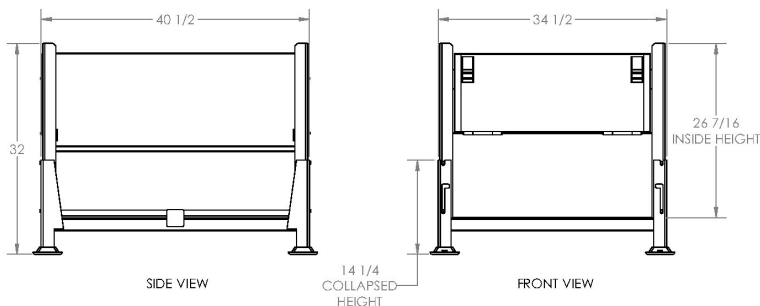
Standard Zinc Plated Finish

## Product Information

- Collapsible, 2 Gate, Sheet Metal Steel bin
- Inside Usable volume: 18 Cubic Feet
- Half-Drop Gates on both 34 1/2" sides
- Sheet Metal 4 sides with safety edges
- Sheet Metal Floor on Tubing Base Structure
- Load capacity - 3200 lbs UDL
- Stack height when full 5 high
- Colour - Zinc Plated Finish

## Disclaimer

- All dimensions are approximate
- The customer is responsible for determining whether the Davco Industries product will be suitable for their own application
- It is the responsibility of the customer to determine all critical dimensions match their own requirement
- Davco Industries will not be liable for any loss or damage arising from the Davco Industries Product



DIMENSIONS



STACKED 7 HIGH FOR  
TRUCK SHIPMENT



STACKED 3 HIGH FOR  
TRUCK SHIPMENT